



Choose your sweetness level

Milk tea

- Ten milk tea M:550/L:630
- Brown sugar milk tea M:660/L:740
- Small taro ball milk tea M:670/L:750
- Caramel milk tea M:630/L:710
- Chinese mesona jelly milk tea M:630/L:710
- Oolong milk tea M:580/L:660
- Jasmine milk tea M:580/L:660
- Chai milk tea M:640/L:720

Milk (All items can be made with soy milk.)

- Ten brown sugar cream milk M:740/L:820
- Brown sugar milk M:680/L:760
- Strawberry milk M:620/L:700
- Chocolate cocoa milk M:620/L:700
- Matcha milk M:620/L:700
- Sweet potato milk M:740/L:820
- Taro milk M:740/L:820

Soda Seasonal

- Mango jelly in mango soda (with pineapple nata de coco) M:740
- Lemon soda (with nata de coco) M:740
- Strawberry soda (with nata de coco & pulp) M:740
- Pineapple & passion fruit soda (with nata de coco & pulp) M:740

Taiwanese tea

- Taiwanese lemon tea (with nata de coco) M:680
- Grapefruit tea (with nata de coco & pulp) M:680
- Pineapple & passion fruit tea (with nata de coco) M:680
- Peach oolong tea (with pineapple nata de coco) M:580/L:660
- Mango jasmine tea (with pineapple nata de coco) M:580/L:660

Smoothie

- Ten milk tea smoothie M:680/L:760
- Brown sugar milk tea smoothie M:750/L:830
- Taiwan sweets smoothie Milk tea smoothie Small taro ball/Tofu pudding Chinese mesona jelly M:780/L:860
- Chocolate cocoa smoothie M:680/L:760

Fruit juice Seasonal

- Mango smoothie Mango smoothie Mango/Mango syrup M:720/L:800
- Mango juice (with pineapple nata de coco) M:620/L:700
- Mango lassi M:620/L:700
- Strawberry lassi M:620/L:700

Additional toppings

- Tapioca double 80
- Whipped cream 80
- Chinese mesona jelly 80
- Seasonal Mango ice cream 80
- Small taro ball 120
- Seasonal Mango 120
- Pineapple nata de coco 80
- Tofu pudding 120
- Almond tofu pudding 120
- Taro ball (4pieces) 120
- Taro 120
- Sweet potato 120
- Red beans 120
- Peanuts 120
- Coix seeds 120

Seasonal Specials

Seasonal / In-store only

Pineapple & passion fruit snow ice

Milk snow ice × Mango smoothie
Pineapple & passion fruit sauce Whipped cream/Nata de coco Tapioca 1200



Mango snow ice

Milk snow ice × Mango smoothie
Mango/Mango ice cream Mango syrup/Tapioca 1280



Strawberry snow ice

Milk snow ice × Milk tea smoothie
Strawberry sauce/Whipped cream Nata de coco/Condensed milk-Tapioca 1200



Tapioca on the side

Healthy sweet tofu pudding

Homemade douhua with organic soy milk — a light, protein-rich Taiwanese dessert.



Special tofu pudding

Tofu pudding/Sweet potato/Taro Red beans/Peanuts/Coix seeds Chinese mesona jelly/Tapioca Brown sugar smoothie

850



Taro ball tofu pudding

Tofu pudding Taro ball/Tapioca Brown sugar smoothie

800



Peanuts tofu pudding

Tofu pudding/Peanuts Red beans/Tapioca Brown sugar smoothie

800



Healthy sweets tofu pudding

Tofu pudding/ Tapioca Brown sugar smoothie

650

Almond tofu pudding

Smooth and silky with a gentle almond aroma and mild sweetness.



Taro ball almond tofu pudding

Almond tofu pudding/Taro ball Taro sauce/Tapioca Brown sugar smoothie

800



Strawberry almond tofu pudding

Almond tofu pudding Strawberry sauce/Nata de coco Tapioca/Brown sugar smoothie

820



Almond tofu pudding

Almond tofu pudding Goji berry/Tapioca Brown sugar smoothie

680



Mango almond tofu pudding

Almond tofu pudding/Mango Mango sauce/Mango ice cream Pineapple nata de coco Tapioca/Mango smoothie

840

Taro ball

A famous sweet from Jiufen. Chewy dumplings made with sweet potato and taro.



Taro ball & sweet potato

Taro ball/Sweet potato/Taro Tapioca/Brown sugar smoothie

840



Taro ball & beans

Taro ball/Red beans Coix seeds/Peanuts/Tapioca Brown sugar smoothie

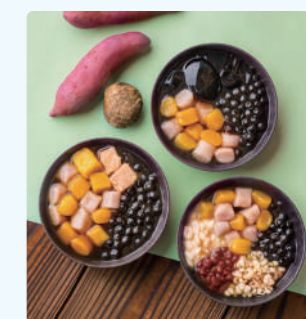
840



Taro ball & chinese mesona jelly

Taro ball/Chinese mesona jelly Coffee fresh/Tapioca Brown sugar smoothie

780



*Pictures are for reference only. *Prices are tax included *The items offered may change due to the weather, purchases, sales conditions, etc.

1 Choose your sweetness level

- More sweet
- Normal sweet
- Less sweet
- No sweet

2 Choose your ice level

- Normal ice
- Less ice
- No ice

TABLE FOR TWO

Taiwan Ten Cafe supports and participates in the "TABLE FOR TWO" program, which was created to address the global issues of hunger and obesity.

Eligible drinks



Peach oolong tea



Jasmine tea

Does not include tapioca M:450/L:530

Taiwanese castella



Taiwanese plane castella plate (full)

Taiwanese plane castella/Tapioca Whipped cream/Caramel sauce 860



Taiwanese plane castella plate (half)

Taiwanese plane castella/Tapioca Whipped cream/Caramel sauce 480



Taiwanese plane castella

Take out only 650



週數原表

珍珠奶茶類

可調節甜度

- | | | | | | | | |
|--------------|-------------|-------------|-------------|-------------|-------------|-------------|-------------|
| | | | | | | | |
| (甜商店特製) 珍珠奶茶 | 焦糖珍珠奶茶 | 小芋圓珍珠奶茶 | 焦糖珍珠奶茶 | 仙草珍珠奶茶 | 珍珠烏龍奶茶 | 珍珠茉莉花茶 | 印度香料珍珠奶茶 |
| M:550/L:630 | M:660/L:740 | M:670/L:750 | M:630/L:710 | M:630/L:710 | M:580/L:660 | M:580/L:660 | M:640/L:720 |

鮮奶類 (全部可更換為豆漿)

- | | | | | | | |
|-------------|-------------|-------------|-------------|-------------|-------------|-------------|
| | | | | | | |
| 鮮奶油黑糖鮮奶 | 黑糖鮮奶 | 草莓鮮奶 | 巧克力牛奶 | 抹茶鮮奶 | 地瓜鮮奶 | 芋頭鮮奶 |
| M:740/L:820 | M:680/L:760 | M:620/L:700 | M:620/L:700 | M:620/L:700 | M:740/L:820 | M:740/L:820 |

蘇打類

台灣特色茶類

- | | | | | | | | | |
|-------------|------------|---------------|------------------|-----------------|------------------|--------------------|-------------|---------------|
| | | | | | | | | |
| 芒果凍蘇打 (含椰果) | 檸檬蘇打 (含椰果) | 草莓蘇打 (含椰果·果肉) | 鳳梨百香果蘇打 (含椰果·果肉) | 檸檬茉莉花茶 (含椰果·果肉) | 葡萄柚茉莉花茶 (含椰果·果肉) | 鳳梨百香果茉莉花茶 (含椰果·果肉) | 白桃烏龍茶 (含椰果) | 芒果醬茉莉花茶 (含椰果) |
| M:740 | M:740 | M:740 | M:740 | M:680 | M:680 | M:680 | M:580/L:660 | M:580/L:660 |

冰沙類

果汁·優格類

- | | | | | | | | |
|-------------|-------------|--------------------------|-------------|-----------------------|-------------|-------------|-------------|
| | | | | | | | |
| 奶茶冰沙 | 黑糖珍珠奶茶冰沙 | 台灣滿足冰沙 (奶茶冰沙/小芋圓/豆花/仙草凍) | 巧克力可可冰沙 | 芒果冰沙 (芒果冰沙/芒果果肉/芒果果醬) | 芒果果汁 (含椰果) | 芒果優格飲 | 草莓優格飲 |
| M:680/L:760 | M:750/L:830 | M:780/L:860 | M:680/L:760 | M:720/L:800 | M:620/L:700 | M:620/L:700 | M:620/L:700 |

Seasonal Specials

季節限定/僅限內用

鳳梨百香果綿綿冰

牛奶綿綿冰 × 茉莉花茶凍
鳳梨百香果醬/鮮奶油
椰果/珍珠
1200

芒果綿綿冰

牛奶綿綿冰 × 芒果凍
芒果果肉/芒果冰
芒果果醬/珍珠
1280

草莓綿綿冰

牛奶綿綿冰 × 茉莉花茶凍
草莓醬汁/鮮奶油/椰果
煉乳/珍珠
1200

傳統豆花

使用有機豆漿製作
的手工豆花——
清爽、富含蛋白質的
台灣甜點

- | | | | |
|---|----------------------------------|-------------------------------------|-------------------------------|
| | | | |
| 綜合豆花 豆花/地瓜/芋頭/紅豆/花生 薏仁/仙草凍/珍珠 黑糖蜜冰沙 850 | 芋圓豆花 豆花/芋圓/珍珠 黑糖蜜冰沙 800 | 花生豆花 豆花/花生/紅豆/珍珠 黑糖蜜冰沙 800 | 傳統豆花 豆花/珍珠 黑糖蜜冰沙 650 |

杏仁豆花

口感滑順細緻，帶
有淡雅的杏仁香氣
與溫和的甜味

- | | | | |
|--|---|------------------------------------|---|
| | | | |
| 芋圓杏仁豆花 杏仁豆花/芋圓/芋泥/珍珠/ 黑糖蜜冰沙 800 | 草莓杏仁豆花 杏仁豆花/草莓醬汁/椰果 珍珠/黑糖蜜冰沙 820 | 杏仁豆花 杏仁豆花/枸杞/珍珠 黑糖蜜冰沙 680 | 芒果杏仁豆花 杏仁豆花/芒果果肉/芒果果醬 芒果冰/椰果/珍珠/芒果冰沙 840 |

九份芋圓

九份的知名甜點
以地瓜與芋頭製作
的Q彈小圓

- | | | |
|---------------------------------------|--|--|
| | | |
| 芋圓 芋滿足 芋圓/地瓜/芋頭/珍珠 黑糖蜜冰沙 840 | 芋圓 豆滿足 芋圓/紅豆/薏仁/花生/珍珠 黑糖蜜冰沙 840 | 芋圓 仙草滿足 芋圓/仙草凍/奶精球/珍珠 黑糖蜜冰沙 780 |

※照片僅供參考 ※價格皆為含稅 ※因天氣、運送因素、販售狀況等，可能會調整提供的商品內容

1 可調節甜度

2 冰量調整

- 多糖
- 正常甜
- 微糖
- 無糖

- 正常
 - 少冰
 - 去冰
- M/L +0 M/L +0 M+80/L+100

+ 追加小料

- | | | | |
|---------|-------------|---------------|--------|
| | | | |
| 珍珠加倍 80 | 仙草凍 80 | 小芋圓 120 | 椰果 80 |
| | | | |
| 鮮奶油 80 | 夏季限定 芒果冰 80 | 夏季限定 芒果果肉 120 | 薏仁 120 |

TABLE FOR TWO

我們支持並積極參與「TABLE FOR TWO」計劃
購買指定飲料後，將捐贈20日元，協助為發展中國家的
兒童提供校餐

指定商品

- | | |
|--------------|-------------|
| | |
| 白桃烏龍茶 (不含珍珠) | 茉莉花茶 (不含珍珠) |
| M:450/L:530 | |

鮮奶油古早味蛋糕

- | | | |
|--|--|------------------------|
| | | |
| 焦糖鮮奶油古早味蛋糕(整份) 古早味蛋糕 鮮奶油/黑糖醬/珍珠 860 | 焦糖鮮奶油古早味蛋糕(半份) 古早味蛋糕 鮮奶油/黑糖醬/珍珠 480 | 原味古早味蛋糕 外帶限定 650 |

Taiwan ten cafe
[SWEETS] Allergies information

| Category | Product name | 8 specified ingredients | | | | | | | | 20 equivalent specified ingredients | | | | | | | | | | | | | | | | | | |
|------------------------------|---|-------------------------|------|-------------|------------|--------|--------|------|--------|-------------------------------------|---------|---------|--------|-------|-------|------------|--------|--------|---------|-------|------------|------------|------|--------|----------|---------|------|---------------|
| | | egg | milk | wheat | buck wheat | peanut | shrimp | crab | walnut | sesame | soybean | gelatin | orange | peach | apple | kiwi fruit | banana | almond | abalone | squid | salmon roe | cashew nut | beef | salmon | mackerel | chicken | pork | macademia nut |
| TARO BALLS | Taro ball & sweet potato | | | | | | | | | | | | | | | | | | | | | | | | | | | |
| | Taro ball & beans | | | ※coix seeds | | ● | | | | | | | | | | | | | | | | | | | | | | |
| | Taro ball & chinese mesona jelly | | ● | | | | | | | | | | | | | | | | | | | | | | | | | |
| HEALTHY SWEETS TOFU PUDDINGS | Special tofu pudding | | | ※coix seeds | | ● | | | | | | | | | | | | | | | | | | | | | | |
| | Taro ball tofu pudding | | | | | | | | | | | | | △ | | | | | | | | | | | | | | |
| | Peanuts tofu pudding | | | | | ● | | | | | | | | | | | | | | | | | | | | | | |
| | Healthy sweets tofu pudding | | | | | | | | | | | | | | | | | | | | | | | | | | | |
| | Strawberry tofu pudding | | | | | | | | | | | | | | | | | | | | | | | | | | | |
| | Pineapple & passion fruit tofu pudding | | | | | | | | | | | | | | | | | | | | | | | | | | | |
| | Mango tofu pudding | | | | | | | | | | | | | | | | | | | | | | | | | | | |
| ALMOND TOFU PUDDINGS | Almond tofu pudding | | ● | | | | | | | | | | | | | | | | | | | | | | | | | |
| | Taro ball almond tofu pudding | | ● | | | | | | | | | | | | | | | | | | | | | | | | | |
| | Strawberry almond tofu pudding | | ● | | | | | | | | | | | | | | | | | | | | | | | | | |
| | Pineapple & passion fruit almond tofu pudding | | ● | | | | | | | | | | | | | | | | | | | | | | | | | |
| | Mango almond tofu pudding | | ● | | | | | | | | | | | | | | | | | | | | | | | | | |
| TAIWANESE SNOW ICES | Mango snow ice | ● | ● | | | | | | | | | | | | | | | | | | | | | | | | | |
| | Strawberry snow ice | ● | ● | | | | | | | | | | | | | | | | | | | | | | | | | |
| | Pineapple & passion fruit snow ice | ● | ● | | | | | | | | | | | | | | | | | | | | | | | | | |
| TEN TAIWANESE CASTELLAS | Taiwanese plane castella | ● | ● | ● | | | | | | | | | | | | | | | | | | | | | | | | |
| | Taiwanese plane castella plate | ● | ● | ● | | | | | | | | | | | | | | | | | | | | | | | | |
| PINEAPPLE CAKES | Traditional Pineapple cake | ● | ● | ● | | | | | | | | | | | | | | | | | | | | | | | | |
| | Classic pineapple cake | ● | ● | ● | | | | | | | | | | | | | | | | | | | | | | | | |

※People who have wheat allergies very rarely cause allergy symptoms when eat coix seeds.

※Menus may differ in different branches.

※There is a possibility that use common cookware.Please inquire when you order.

△ : Malic acid

Taiwan ten cafe [DRINK] Allegies information
Shinjyuku • Kochi • Solamachi • EXPOCITY

| Category | Product name | 8 specified ingredients | | | | | | | | 20 equivalent specified ingredients | | | | | | | | | | | | | | | | | | | | | | | |
|-------------------------|--------------------------------|-------------------------|------|-------|------------|--------|--------|------|--------|-------------------------------------|---------|---------|--------|-------|-------|------------|--------|--------|---------|-------|------------|------------|------|--------|----------|---------|------|---------------|-----|----------|---|---|--|
| | | egg | milk | wheat | buck wheat | peanut | shrimp | crab | walnut | sesame | soybean | gelatin | orange | peach | apple | kiwi fruit | banana | almond | abalone | squid | salmon roe | cashew nut | beef | salmon | mackerel | chicken | pork | macadamia nut | yam | caffeine | | | |
| MILKTEA | Ten milk tea | | ● | | | | | | | | | | | | | | | | | | | | | | | | | | | | ● | | |
| | Brown sugar milk tea | | ● | | | | | | | | | | | | | | | | | | | | | | | | | | | | ● | | |
| | Small taro ball milk tea | | ● | | | | | | | | | | | | | | | | | | | | | | | | | | | | ● | | |
| | Caramel milk tea | | ● | | | | | | | | | | | | | | | | | | | | | | | | | | | | ● | | |
| | Chinese mesona jelly milk tea | | ● | | | | | | | | | | | | △ | | | | | | | | | | | | | | | | ● | | |
| | Oolong milk tea | | ● | | | | | | | | | | | | | | | | | | | | | | | | | | | | ● | | |
| | Jasmine milk tea | | ● | | | | | | | | | | | | | | | | | | | | | | | | | | | | ● | | |
| Chai milk tea | | ● | | | | | | | | | | | | | | | | | | | | | | | | | | | | ● | | | |
| MILK • SOYMILK | Ten brown sugar cream milk | | ● | | | | | | | | | | | | | | | | | | | | | | | | | | | | | | |
| | Brown sugar milk | | ● | | | | | | | | | | | | | | | | | | | | | | | | | | | | | | |
| | Taro milk | | ● | | | | | | | | | | | | | | | | | | | | | | | | | | | | | | |
| | Sweet potato milk | | ● | | | | | | | | | | | | | | | | | | | | | | | | | | | | | | |
| | Chocolate cocoa milk | | ● | | | | | | | | | | | | | | | | | | | | | | | | | | | | | ● | |
| | Matcha milk | | ● | | | | | | | | | | | | | | | | | | | | | | | | | | | | | ● | |
| | Strawberry milk | | ● | | | | | | | | | | | | △ | | | | | | | | | | | | | | | | | | |
| | Ten brown sugar cream soymilk | | ● | | | | | | | | | | | | | | | | | | | | | | | | | | | | | | |
| | Brown sugar soymilk | | ● | | | | | | | | | | | | | | | | | | | | | | | | | | | | | | |
| | Taro soymilk | | ● | | | | | | | | | | | | | | | | | | | | | | | | | | | | | | |
| | Sweet potato soymilk | | ● | | | | | | | | | | | | | | | | | | | | | | | | | | | | | | |
| Chocolate cocoa soymilk | | ● | | | | | | | | | | | | | | | | | | | | | | | | | | | | | | ● | |
| Matcha soymilk | | ● | | | | | | | | | | | | | | | | | | | | | | | | | | | | | ● | | |
| Strawberry soymilk | | ● | | | | | | | | | | | | △ | | | | | | | | | | | | | | | | | | | |
| JUICE • LASSI | Mango juice | | | | | | | | | | | | | ● | | | | | | | | | | | | | | | | | | | |
| | Mango lassi | | ● | | | | | | | | | | | △ | | | | | | | | | | | | | | | | | | | |
| | Strawberry lassi | | ● | | | | | | | | | | | △ | | | | | | | | | | | | | | | | | | | |
| SODA | Mango jelly in mango soda | | | | | | | | | | | | | △ | | | | | | | | | | | | | | | | | | | |
| | Pineapple & passion fruit soda | | | | | | | | | | | | | △ | | | | | | | | | | | | | | | | | | | |
| | Strawberry soda | | | | | | | | | | | | | | | | | | | | | | | | | | | | | | | | |
| | Lemon soda | | | | | | | | | | | | | | | | | | | | | | | | | | | | | | | | |
| SMOOTHIE | Taiwan sweets smoothie | | ● | | | | | | | | | | | △ | | | | | | | | | | | | | | | | | ● | | |
| | Ten milk tea smoothie | | ● | | | | | | | | | | | | | | | | | | | | | | | | | | | | ● | | |
| | Mango smoothie | | ● | | | | | | | | | | | △ | | | | | | | | | | | | | | | | | ● | | |
| | Chocolate cocoa smoothie | | ● | | | | | | | | | | | | | | | | | | | | | | | | | | | | ● | | |
| | Brown sugar milk tea smoothie | | ● | | | | | | | | | | | | | | | | | | | | | | | | | | | | ● | | |
| TAIWANESE TEA | Grapefruit tea | | | | | | | | | | | | | | | | | | | | | | | | | | | | | | ● | | |
| | Pineapple & passion fruit tea | | | | | | | | | | | | | | | | | | | | | | | | | | | | | | ● | | |
| | Mango jasmine tea | | | | | | | | | | | | | | | | | | | | | | | | | | | | | | ● | | |
| | Peach oolong tea | | | | | | | | | | | | | △ | | | | | | | | | | | | | | | | | ● | | |
| | Lemon jasmine tea | | | | | | | | | | | | | | | | | | | | | | | | | | | | | | ● | | |
| TABLE FOR TWO | Peach oolong tea | | | | | | | | | | | | | △ | | | | | | | | | | | | | | | | | ● | | |
| | Jasumine tea | | | | | | | | | | | | | | | | | | | | | | | | | | | | | | ● | | |
| TOPPING | Tapioca double | | | | | | | | | | | | | | | | | | | | | | | | | | | | | | | | |
| | Chinese mesona jelly | | | | | | | | | | | | | △ | | | | | | | | | | | | | | | | | | | |
| | Whipped cream | | ● | | | | | | | | | | | | | | | | | | | | | | | | | | | | | | |
| | Pineapple nata de coco | | | | | | | | | | | | | △ | | | | | | | | | | | | | | | | | | | |
| | Tofu pudding | | | | | | | | | | | | | | | | | | | | | | | | | | | | | | | | |
| | Almond tofu pudding | | ● | | | | | | | | | | | | | | | | | | | | | | | | | | | | | | |
| | Small taro ball | | | | | | | | | | | | | | | | | | | | | | | | | | | | | | | | |
| | Taro ball | | | | | | | | | | | | | | | | | | | | | | | | | | | | | | | | |
| | Taro | | | | | | | | | | | | | | | | | | | | | | | | | | | | | | | | |
| | Sweet potato | | | | | | | | | | | | | | | | | | | | | | | | | | | | | | | | |
| | Coix seeds | | | | ※1 | | | | | | | | | | | | | | | | | | | | | | | | | | | | |
| | Red beans | | | | | | | | | | | | | | | | | | | | | | | | | | | | | | | | |
| | Peanuts | | | | | | | ● | | | | | | | | | | | | | | | | | | | | | | | | | |
| Mango | | | | | | | | | | | | | | | | | | | | | | | | | | | | | | | | | |
| Mango ice cream | | | | | | | | | | | | | | | | | | | | | | | | | | | | | | | | | |

※1 People who have wheat allergies very rarely cause allergy symptoms when eat coix seeds.
 ※ Menus may differ in different branches.
 ※ There is a possibility that use common cookware. Please inquire when you order.
 △ : Malic acid